

August®

User Manual

DVB-T202 (V2.0)



August International Ltd
Rawmec Business Park
Hoddesdon EN11 0EE
United Kingdom
Tel: +44 (0) 845 2500586

EU Distributor:
Daffodil Germany GmbH
Bayernstr. 10
D-30855 Langenhagen
Germany
Tel: +49 (0) 511 97812978

www.augustint.com

- EN** USB Freeview TV Receiver
- FR** Récepteur TNT USB
- DE** USB DVB-T TV Empfänger
- IT** Ricevitore USB per digitale terrestre
- ES** Receptor USB de Televisión TDT

User Manual

Thank you for buying this August product. You may already be familiar with using similar products but please take the time to read these instructions carefully. They are designed to familiarise you with the product's many features and to ensure that you get the very best from your purchase.

Safety

In order to ensure your safety and the safety of others, please read the Safety Instructions before using this product.

Disposal

Please ensure the product and its accessories are disposed of in compliance with WEEE (Waste Electrical and Electronic Equipment) Directive and any other applicable regulations. Please check with your local authority for regional disposal regulations.

Declaration of Conformity

The Declaration of Conformity can be found on our website at <http://augustint.com/en/declaration/>

Customer Service:

Should you need support with this product, please contact our Customer Service Centre:
Telephone: +44 (0) 845 250 0586
Email: service@augustint.com

Contents

| | |
|----------------------------------------------|----|
| 1. Introduction | 1 |
| 2. Hardware Connections | 3 |
| 3. How to install Driver and Software | 4 |
| 4. Remote Control | 14 |
| 5. Frequently Asked Questions | 15 |
| 6. Warranty | 18 |

1. Introduction

1.1 Important Information

It is suggested that you use a roof top aerial when scanning for TV channels for the first time, if any signal is detected, the channel information will be saved on your computer, you may then switch back to the portable antenna supplied and change your location to find the best place to receive the signal.

Please note the included portable antenna may only be used in areas where signal is very strong. As mentioned on the Freeview website, only some households might be able to use a set top aerial. This only applies if you live in an area with coverage close to a transmitter, but reception would still be unreliable and they strongly recommend that you use a roof top aerial for good reception.

The reception will improve along with the progress of the Digital Switchover Program. Reception may also be affected by various factors such as how close you are to transmitters, tall buildings, thick walls, ceilings and weather etc.

Note:

1. This product is portable but not suitable for use when travelling at high speeds.
2. When you use the scheduled record function, real-time recording or time shifting, please make sure that you have sufficient hard disk space to save the data.
3. In order to operate this device properly, please follow the user manual and suggested setup. Improper operation may cause your system to become unstable or crash. Before removing the TV receiver or any other device, please check that all related applications have been closed.
4. We reserve the right to amend the application and its functions. All newly released drivers and applications will be uploaded to our website.

1.2 Features

- Ultra-compact USB2.0 Digital TV Receiver
- Plug & Play, Powered by USB Port
- Universal and Regional Channel Scan
- Time-Shift Recording
- Real-time and Scheduled Recording
- Electronic Program Guide and Subtitles
- Support MPEG1/2/4 and H.264
- Ultra-low power consumption

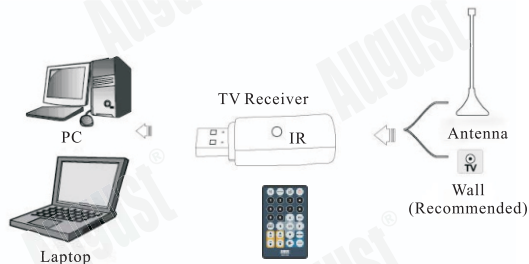
1.3 System Requirements

- CPU: 1.7GHz or higher
- RAM: 512MB or higher
- Graphics Card: 32 MB or higher
- Sound Card, CD-ROM, USB2.0 Port
- Operating Systems: Windows XP/Vista/7/8/10
- Microsoft Direct X9.0 or higher

1.4 Package Contents

- USB Freeview TV Receiver
- Portable Antenna with Magnetic Base
- Remote Control
- Software CD
- User Manual

2. Hardware Connections



Step 1: Plug the USB Freeview TV Receiver to the USB port of your laptop or PC.

Step 2: Connect the TV Receiver to your rooftop aerial or the portable antenna supplied.

3. How to install Driver and Software

3.1 Driver Installation

Step 1: Insert the device into your computer's USB port and connect it to your rooftop aerial as shown in "Hardware Connections" on page 3.

- Windows XP & Vista users

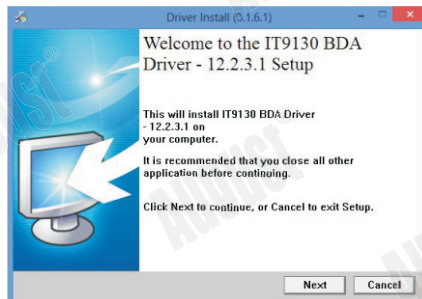
For Windows XP and Vista users, the "Found New Hardware Wizard" will now appear on your screen, please select "Cancel".



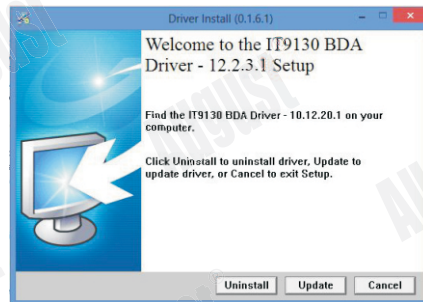
Step 2: Insert the software CD supplied, an auto-play window should appear on your screen. Click “Driver Install” if the screen appears, if not then run the file Driver\setup.exe directly from the software CD.



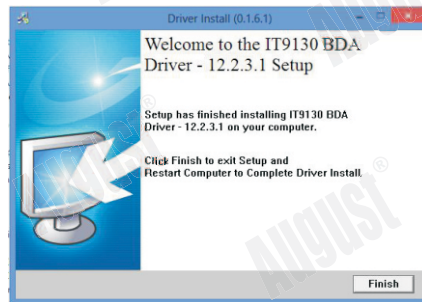
Step 3: Click “Next” to continue the installation.



Step 4: Click “Update”.

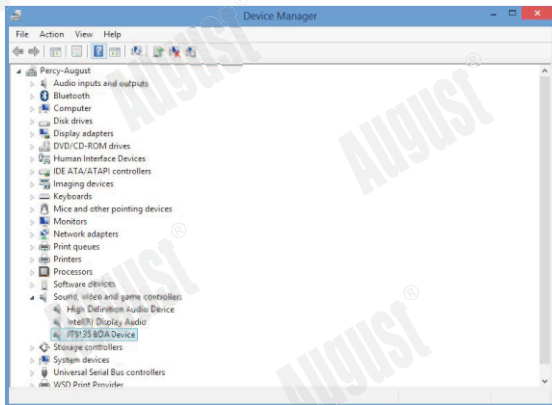


Step 5: Click “Finish” to completely install the Driver Software.



* Note: The supplied remote control is designed to work with Total Media, and will not work with Windows Media Centre.

Step 6: To check that the device has installed properly navigate to your control panel, select “System”-> “Hardware”-> “Device Manager”, and you will see a new item “IT9315 BDA Device” once the driver is successfully installed.



Note:

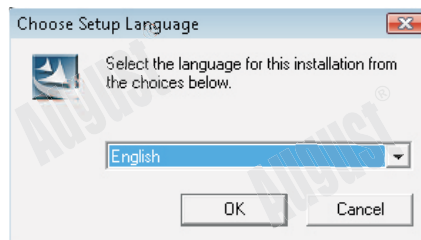
If it has not appeared in Device Manager after installation, please attempt re-installation.

3.2 Software Installation

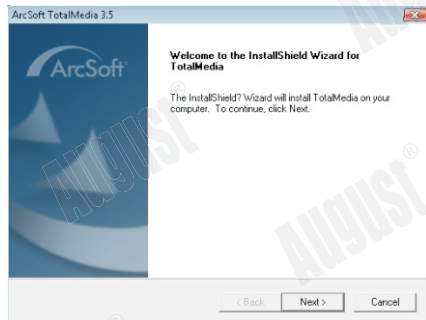
Step 1: Click “Software Install”.



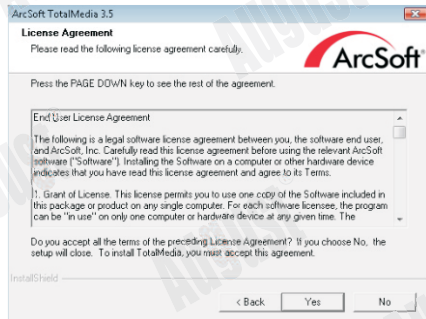
Step 2: Choose your Setup Language once Total Media begins installing.



Step 3: Click “Next” to continue the installation.

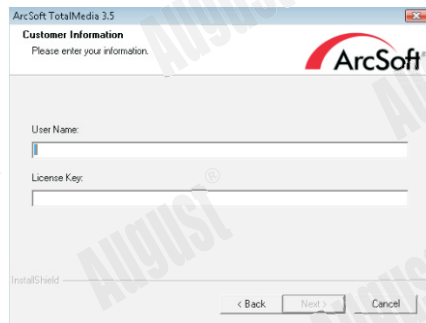


Step 4: Then click “Yes” to agree to the terms of the license agreement.

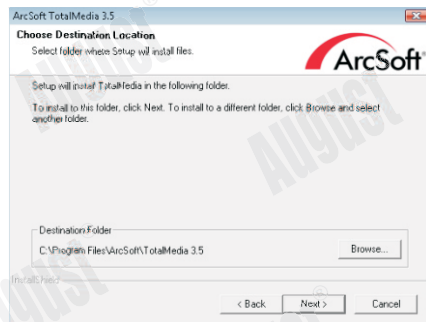


Step 5: Type in a User Name of your choice and the License Key which can be found on the CD paper wallet, then click “Next”.

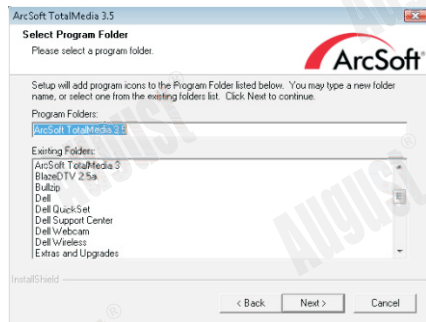
Note: Please keep the License Key for future use as we will not be able to replace any lost License Keys.



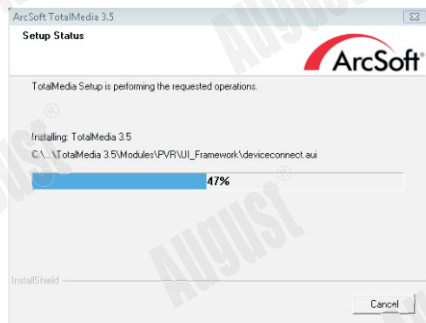
Step 6: To change the destination folder click “Browse” or click “Next” to continue.



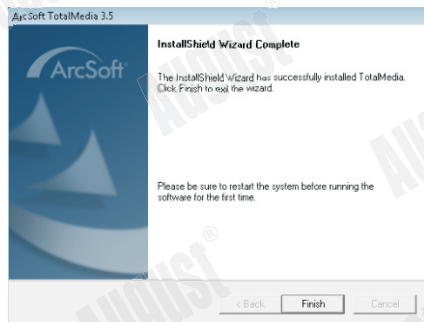
Step 7: Click “Next” once you have chose the destination folder.





Step 8: Please wait whilst Total Media installs.



Step 9: Click “Finish”, to complete the installation of Acrsoft TotalMedia software.

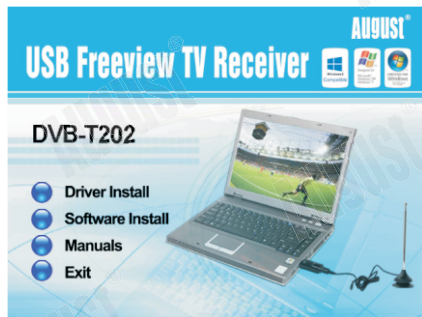


Step 10: The Total Media icon  will appear on your computer's desktop. The icons  (TMMonitor) will appear on the right bottom corner of your computer screen.

Step 11: You can now run the Total Media3.5 application to scan for channels and watch TV on your computer.

3.3 More user instructions

Click “Manuals”, to browse this manual as an electronic version along with manuals for Total Media.



3.4 Arcsoft TotalMedia

For more information about TotalMedia, please click “?” on the menu bar for help, or refer to the manual supplied in the CD or visit their website at www.arcsoft.com.

5. Frequently Asked Questions

5.1 I can not find any channels after the auto scan.

- Please check the status of the Freeview switchover in your area.
- If you have been unable to use a rooftop aerial, it may help to reposition the mini-antenna and rescan, either by a window or on a metal radiator/car roof can improve reception strength.
- Check that the aerial is properly attached to the device.
- Check that the correct country is selected in the Total Media scan settings.
- Re-scanning through an updated rooftop aerial may help to locate the required Freeview signal settings.

5.2 I do not have a roof top aerial, can I use a portable aerial?

You can connect a portable aerial to the device, please be aware though that a rooftop aerial is advised for the best results.

5.3 The device gets perfect pictures when plugged into my roof top aerial, but no picture at all using the small antenna provided.

Please note the included portable antenna may only be used in areas where Freeview signal is very strong. As mentioned on the Freeview website, some households receiving a strong signal will be able to use a set top aerial. This only applies if you live in a coverage area close to a transmitter, but reception could still be unreliable and Freeview strongly recommend to use a rooftop aerial for good reception. Reception may be affected by various factors such as proximity to transmitters, tall building structures, thick walls, ceilings, weather etc.

5.4 The TV picture keeps freezing and/or some TV channels are missing.

Below are some possible reasons of poor Freeview reception, for more information please visit <http://www.freeview.co.uk/help>:

- Local factors such as proximity to transmitters, tall buildings, thick walls, ceilings, weather etc.

- Freeview suggest a booster may be useful to improve the signal strength, if your rooftop aerial is connected to several TVs/Videos, as splitting the aerial (RF) cable to serve several appliances can weaken the signal.

- If your aerial has served you well for a number of years and you're not seeing a clear picture, it might just be old or have taken a beating from the weather, you may need to get your aerial updated. Also, in some parts of the country Freeview signals use a different frequency or transmitter to the one you normally use for your analogue reception.

- If you are using a set top aerial, there may be difficulties in receiving TV signal with a portable antenna in some regions. As mentioned on the Freeview website, some households receiving a strong signal will be able to use a set top aerial. This only applies if you live in a coverage area close to a transmitter, but reception could still be unreliable and Freeview strongly recommend to use a rooftop aerial for good reception.

5.5 The Teletext function does not work.

This device is designed for the European standard of digital broadcasting. The UK use a slightly different broadcast signal

which is why Teletext is not available on this unit and why we do not market this function.

5.6 There is no light on the device, is it faulty?

There is no light on this device, the small window is the IR receiver used by the remote control.

5.7 I can get pictures but no sound.

Please check that your sound card is properly installed and that the volume settings are correct.

5.8 Remote control does not working.

- Check if TMMonitor has been installed properly, please refer to page 12 Step 10.
- Go to the "Control Panel" on your computer, select "System" -> "Hardware" -> "Device Manager", check whether Infrared Receiver has been successfully installed, if not it will show a warning symbol "?", please then try to reinstall the driver.
- Check the remote control's battery.
- Please make sure you are within 5m from the USB TV Receiver.
- The remote control relies on direct line of sight to the receiver, please check that there is nothing between the remote and the USB stick.
- Windows Vista or 7 users can use the Windows Media Centre to watch TV, however please note the supplied remote control is designed to work with Total Media, and will not work with Windows Media Centre or other software.

5.9 The TV some time freezes or slows down.

Freezing whilst watching TV indicates a system resource problem, it most often occurs your PC does not meet the recommended system requirements and if your VGA driver is not properly installed or updated. We also recommend that you close all other programmes whilst watching or recording TV.

6. Warranty

This product is guaranteed for twelve months from the date of the original purchase. In the unlikely event of any defect arising due to faulty materials or workmanship, the unit will be either replaced or repaired free of charge (where possible) during this period. An alternative product will be offered in case the product is no longer available or repairable.

This warranty is subject to the following conditions:

- The warranty is only valid within the country where the product is purchased.
- The product must be correctly installed and operated in accordance to the instructions given in this user manual.
- The product must be used solely for domestic purposes.
- The warranty only covers the main unit, and does not cover the accessories.
- The warranty does not cover the damage caused by misuse, negligence, accident and natural disaster.
- The warranty will be rendered invalid if the product is resold or has been damaged by inexperienced repairs. The manufacturers disclaim any liability for incidental or consequential damages.
- Please consult our customer adviser before returning any product; we are not responsible for any unexpected product returns.
- Any faulty product must be kept and returned in the original packaging with all the accessories and the original copy of the purchase receipt.

The warranty is in addition to, and does not diminish, your statutory or legal rights.

Customer Service:

Telephone: +44 (0) 845 250 0586

Email: service@augustint.com

This product is in compliance with the essential requirements and other relevant provisions of Directive 2014/30/EU. The Declaration of conformity may be consulted online at <http://www.augustint.com/en/declaration>.

